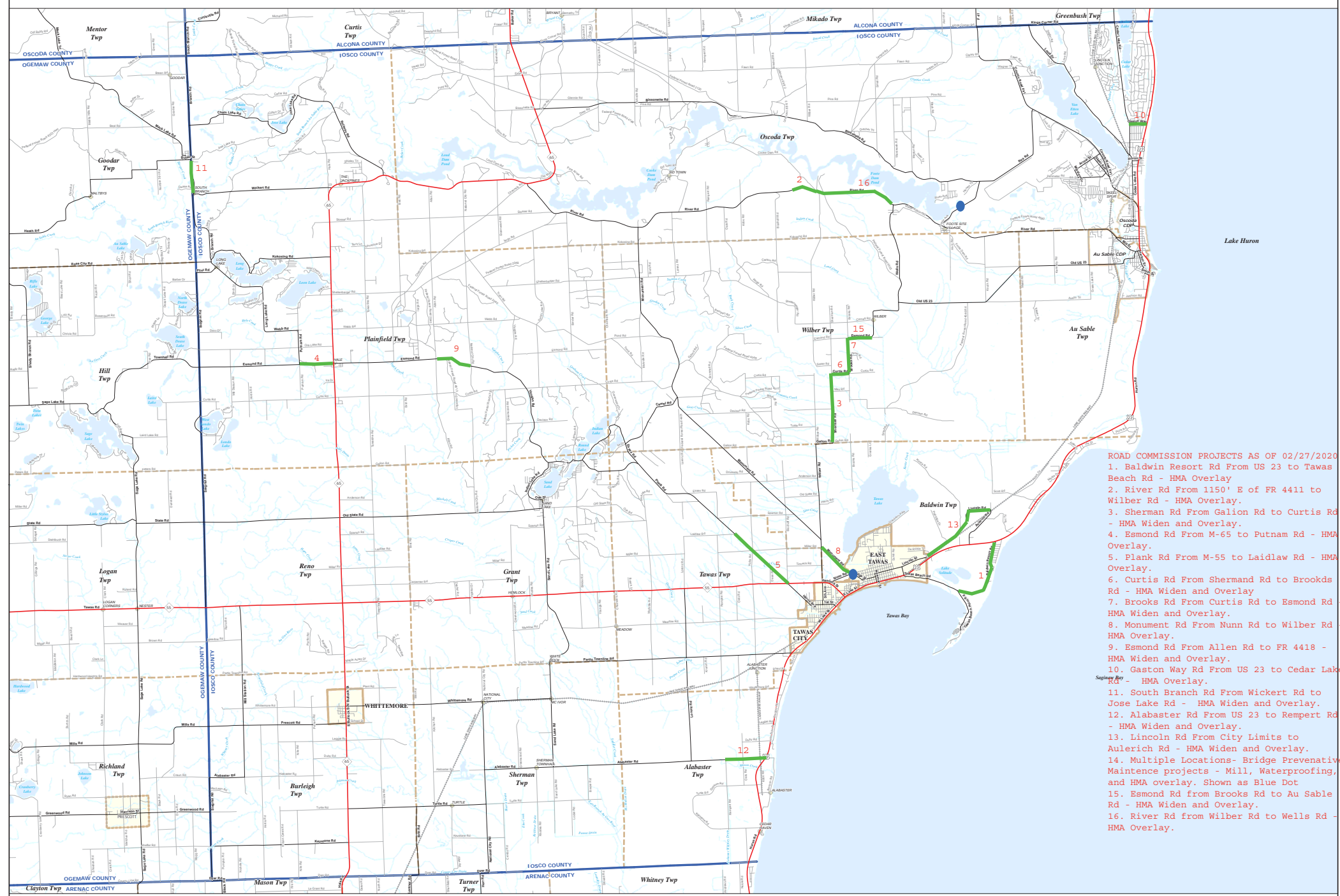


IOSCO COUNTY



- ROAD COMMISSION PROJECTS AS OF 02/27/2020
1. Baldwin Resort Rd From US 23 to Tawas Beach Rd - HMA Overlay
 2. River Rd From 1150' E of PR 4411 to Wilber Rd - HMA Overlay.
 3. Sherman Rd From Galion Rd to Curtis Rd - HMA Widen and Overlay.
 4. Esmond Rd From M-65 to Putnam Rd - HMA Overlay.
 5. Plank Rd From M-55 to Laidlaw Rd - HMA Overlay.
 6. Curtis Rd From Shermand Rd to Brookds Rd - HMA Widen and Overlay
 7. Brooks Rd From Curtis Rd to Esmond Rd - HMA Widen and Overlay.
 8. Monument Rd From Nunn Rd to Wilber Rd - HMA Overlay.
 9. Esmond Rd From Allen Rd to PR 4418 - HMA Widen and Overlay.
 10. Gaston Way Rd From US 23 to Cedar Lake Rd - HMA Overlay.
 11. South Branch Rd From Wickert Rd to Jose Lake Rd - HMA Widen and Overlay.
 12. Alabaster Rd From US 23 to Rempert Rd - HMA Widen and Overlay.
 13. Lincoln Rd From City Limits to Aulerich Rd - HMA Widen and Overlay.
 14. Multiple Locations- Bridge Preventative Maintenance projects - Mill, Waterproofing, and HMA overlay. Shown as Blue Dot
 15. Esmond Rd from Brooks Rd to Au Sable Rd - HMA Widen and Overlay.
 16. River Rd from Wilber Rd to Wells Rd - HMA Overlay.

Source: 2009 TIGER/Line, U.S. Census Bureau, Michigan Geographic Framework, v10a

0 0.5 1 2 Miles

Legend

